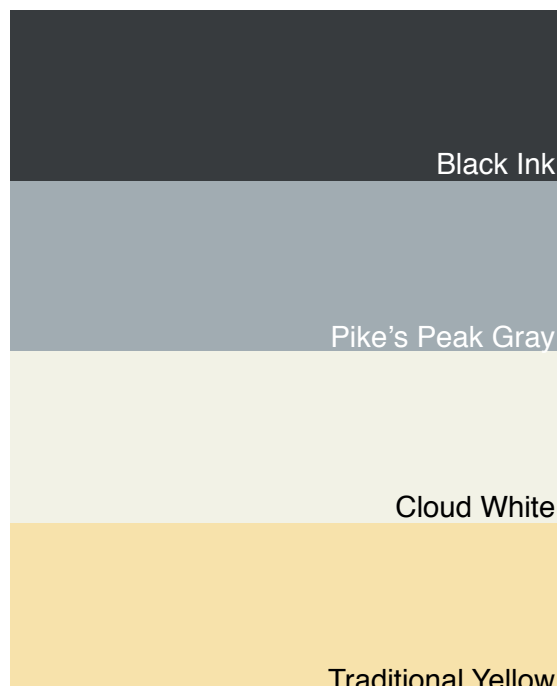


INDOOR CONCRETE STYLES

# TRADITIONAL PALETTE

Concrete blends beautifully with traditional room designs when given neutral finishes and subtle edge details. Traditional rooms often use concrete floors, fireplaces or countertops as a focal point, along with simple, tailored accent pieces to complete the look.

## COLORS + FINISHES



## KEY DETAILS

You can achieve a traditional style using concrete by incorporating elements of these four design principles:

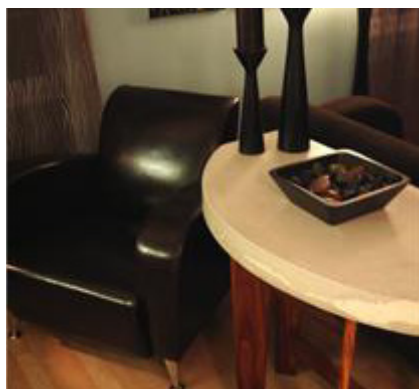
**SIMPLE & FUNCTIONAL**  
Use edge details, moldings and finishes that are timeless and practical.

**CLASSIC WITH A TWIST**  
Update traditional designs with contemporary enhancements, such as a barrel-style concrete sink or modern furnishings.

**NEUTRAL COLORS**  
Use subtle colors as a backdrop for contrasting accents, such as exposed aggregate or colorful glass tile.

**STYLIZED DÉCOR**  
Strive for an uncluttered look, using accents that complement rather than detract from major design elements.

## INDOOR TRADITIONAL ELEMENTS



Furniture



Fireplace surrounds



Concrete tiles



Countertops



Sinks



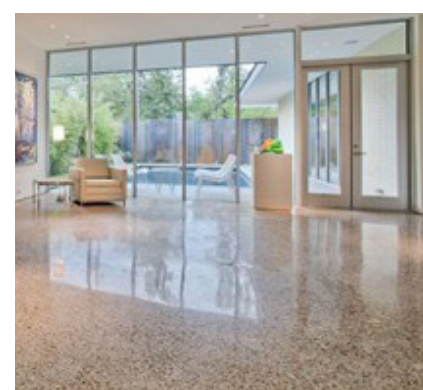
Tubs & showers



Floors



Garage floors

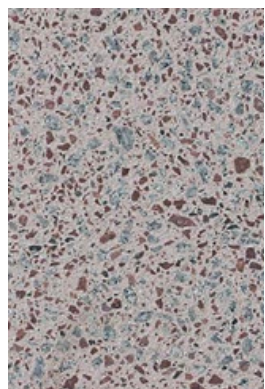


Polished concrete

## TEXTURES



Burlap



Red wine exposed aggregate



Contact us for a free quote!

919.272.2072