

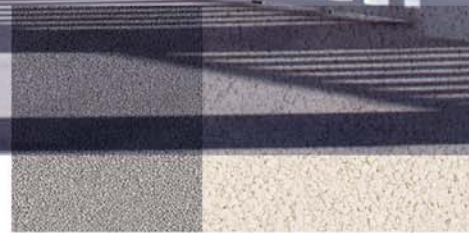
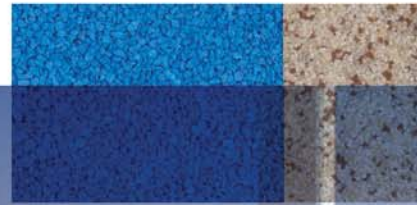


Classic Concrete Design

Inspire to Create



Color & Blend Chart



blending beauty and durability



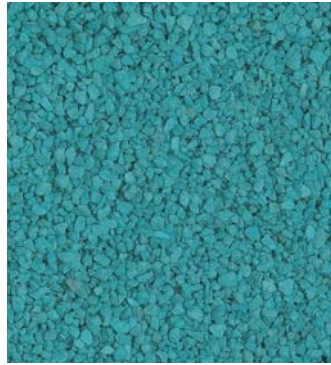
Enjoy quality, variety and versatility.

The following shows the broad range of 3M™ Colorquartz™ Ceramic-Coated Crystals colors and a sampling of the blend possibilities. Use this chart in selecting a color or blend for your next floor, wall, deck or walkway, or create your own. 3M Colorquartz Ceramic-Coated Crystals are available in 14 individual colors and two grade sizes.

3M Colorquartz Ceramic-Coated Crystals Product



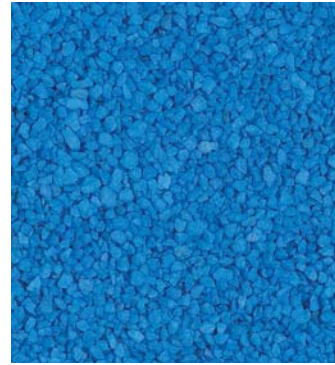
2065 Red-T Grade



3145 Cayman Green-T Grade



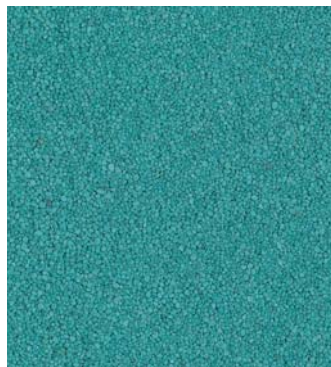
5015 Black-T Grade



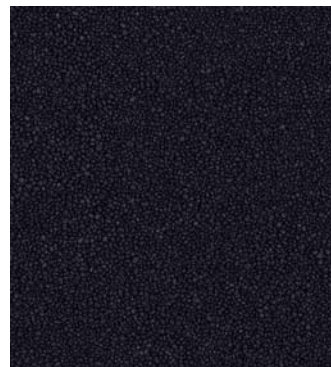
8045 Blue-T Grade



2063 Red-S Grade



3143 Cayman Green-S Grade



5013 Black-S Grade



8043 Blue-S Grade



6023 Tan-S Grade



3033 Green-S Grade



4013 Brown-S Grade



7043 Grey-S Grade



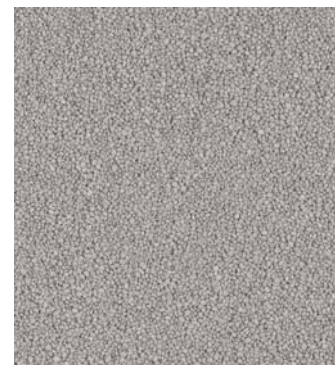
6233 Peach-S Grade



6073 Buff-S Grade



2163 Plum-S Grade



7133 Smoke-S Grade

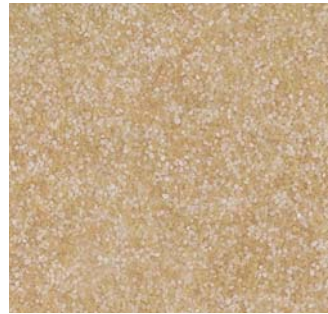
3M Colorquartz Ceramic-Coated Crystals Blend Examples



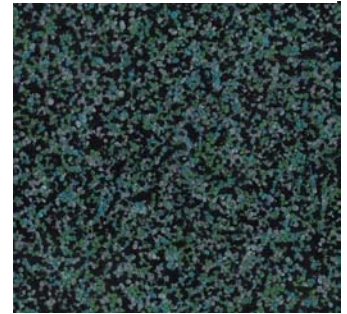
9075 White-T Grade



Opaline
8 White, 1 Grey, 1 Buff



Blond
5 White, 5 Buff



Emerald
4 Black, 3 Grey, 2 Green,
1 Cayman Green



9073 White-S Grade



Greycious
4 Grey, 3 Smoke, 3 Buff



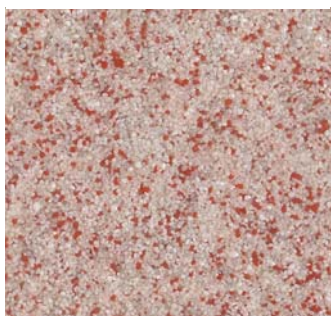
Glazier
6 White, 3 Grey, 1 Smoke



Incite
6 White, 3 Smoke, 1 Black



2233 Coral Rose-S Grade



Rosurient
6 White, 1 Red, 1 Coral Rose,
1 Smoke



Allure
3 Smoke, 3 Grey, 2 Blue,
2 Plum



Mauvell
4 Coral Rose, 3 Plum, 3 Buff

3M Colorquartz Ceramic-Coated Crystals are made from quartz. Pigments, in a ceramic coating, are bonded to each piece of quartz creating brilliant, lasting color. The colors shown here may not be exact due to printing process limitations. The user and the user's customer are responsible for verifying the actual color of the product before applying or installing.



Poise
7 White, 1 Smoke, 1 Buff,
1 Brown



Goldspell
9 White, 1 Tan



Bisque
4 White, 4 Smoke, 2 Buff

Color your world with 3M™ Colorquartz™ Ceramic-Coated Crystals.



Floors



Walkways



Decks



Walls



Countertops



Pools



Metal Roofing

Photos courtesy of:
Floors: Sunbelt Flooring, CA
Walkways: TTK Resurfacing, NC
Decks: Treadit™ Wood Decks
Walls: DuROCK Alfacing International Limited
Countertops: GraniTite® Inc.
Pools: Alan Smith Pool Plastering Inc., CA
Metal Roofing: DURA-LOC ROOFING SYSTEMS LTD.

Design professionals know the value and versatility of 3M Colorquartz Ceramic-Coated Crystals. For floors, walls, countertops, decks and walkways, nothing provides more possibilities. The color is brilliant and the potential to create blends and patterns is unlimited.

3M Colorquartz Ceramic-Coated Crystals are recognized for their high performance. They are compatible with many types of resins used for coating various substrates, including wood or concrete. The crystals are durable and can be applied to achieve textures and slip resistance.

Surfaces made with 3M Colorquartz Ceramic-Coated Crystals are also good-looking and tough. 3M's ceramic coloring process ensures the color will stand up to harsh chemicals and UV rays. And, in a seamless application, there are no joints or seams where dirt and mildew can build up. This makes 3M Colorquartz Ceramic-Coated Crystals ideal for a variety of applications both indoors and out.

Please refer to our product data sheet for additional information on chemical resistance, hardness and sieve specifications.

For more information about 3M Colorquartz Ceramic-Coated Crystals, visit us at www.ccd-nc.com or call us at 919.272.2072

Important Notice to Purchaser:

All statements, technical information and recommendations contained in this literature are based on tests conducted with 3M-approved equipment and are believed to be reliable. However, the accuracy or completeness of the tests are not guaranteed. THE FOLLOWING IS MADE IN LIEU OF ALL WARRANTIES, EXPRESS OR IMPLIED, INCLUDING THE IMPLIED WARRANTIES OF MERCHANTABILITY AND FITNESS FOR A PARTICULAR PURPOSE: The seller's and 3M's only obligation will be to replace the quantity of the product proved to be defective.

Neither the seller nor 3M will be liable for any injury, loss or damage, direct or consequential, arising out of the use or the inability to use the product. Before using, the user must determine the suitability of the product for his or her intended use.

Appearance of the actual installations will vary depending on coatings, or bonding agents used, finished texture, application method and thickness. The user and the user's customer are responsible for verifying the actual color of the product before applying or installing. This notice may not be changed except by an agreement signed by an officer of the seller.



Classic Concrete Design
 Inspire to Create

Classic Concrete Design
www.ccd-nc.com
919.272.2072